



## PS-1543

### Product Description:

P-THERM® PS-1543 is an ultra-soft silicone based thermally conductive gap filler with an embedded fiberglass support and 125 micron removable polyester carrier.

### Construction / Properties:

General	Property	Value	Test Method
	Color	Green	Visual
	Thickness Range	0.5 mm - 5.0 mm	ASTM D374
	Reinforcement Carrier Type	Fiberglass	--
	Density (g/cc)	2.44	ASTM D792
	Heat Capacity (J/g K) @ 50 C	0.83	ASTM E1269
	Hardness (Shore 00)	47	ASTM D2240
	Total Mass Loss (@ 125 C/24 hrs)	0.07%	ASTM E595**
	Flammability Rating	V-0	UL 94
Continuous Use Conditions	-60 - 200 C	QSP-754	

Electrical	Property	Value	Test Method
	Dielectric Breakdown Strength (kV/mm)	6.80	ASTM D149
	Volume Resistivity (ohm-cm)	1.0E+18	ASTM D257

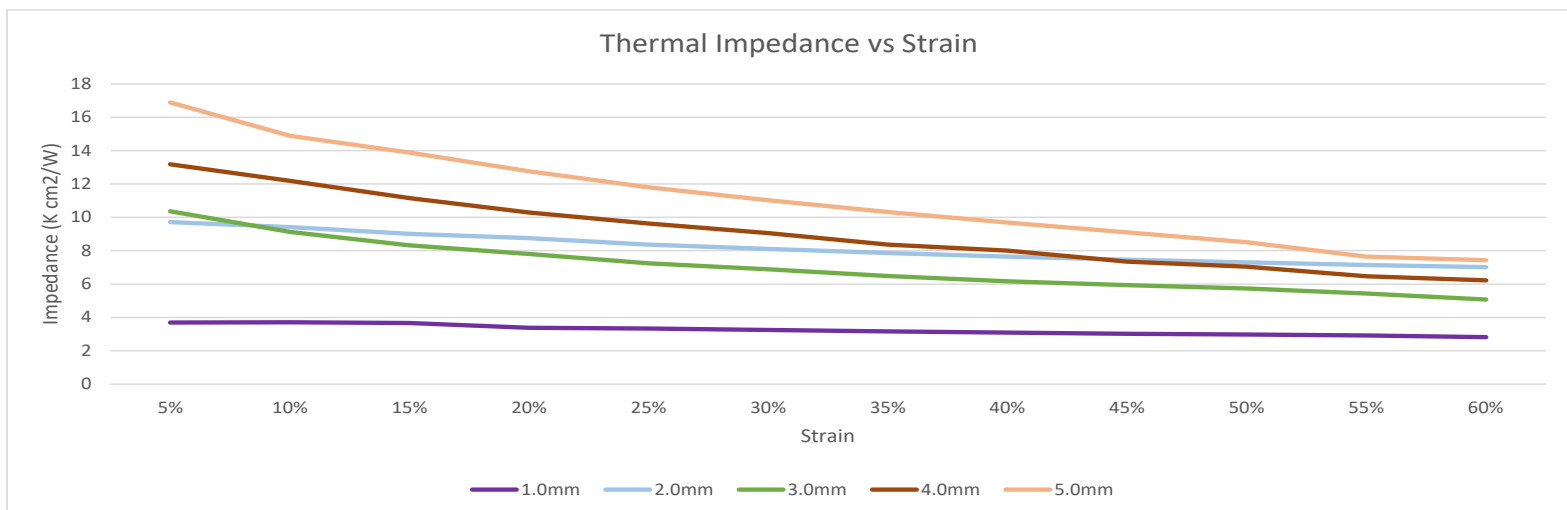
  

Thermal	Property	Value	Test Method	
	Thermal Conductivity	3 W/m K	ASTM D5470*	
	<b>Thermal Performance vs. Strain</b>			
	Deflection (% Strain)	10	20	30
Thermal Impedance (K cm <sup>2</sup> /W) @ 1mm	3.70	3.38	3.25	

\* Thermal conductivity tested at 20% strain.

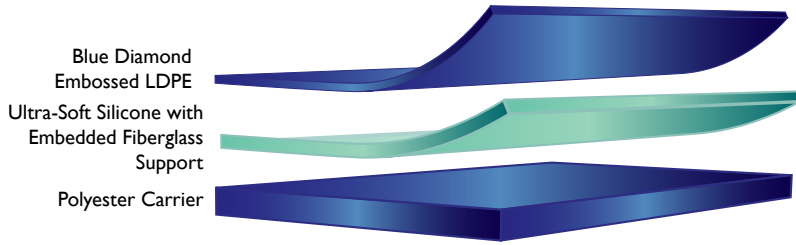
\*\* Tested at atmospheric pressure

\*\*\* Values tested include interfacial thermal resistance: Application performance is directly related to surface roughness, flatness and pressure applied.



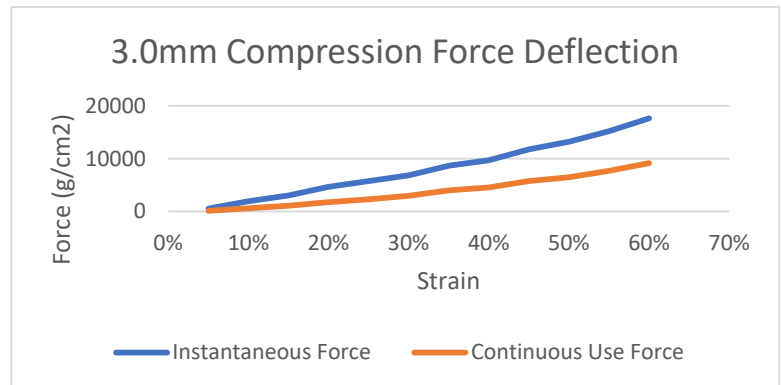
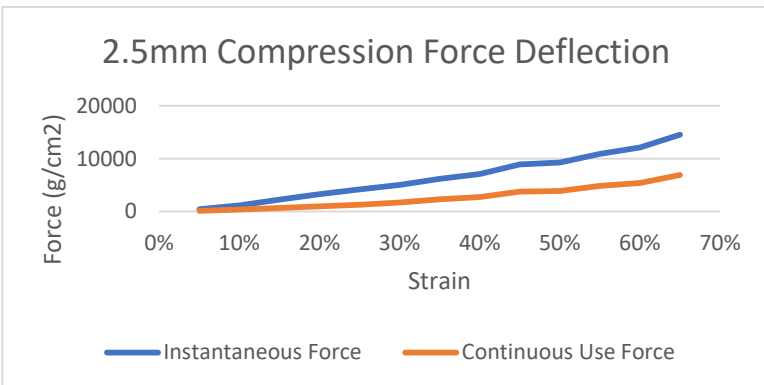
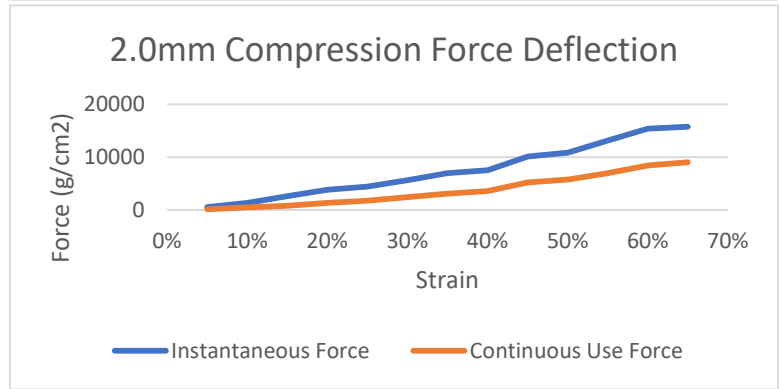
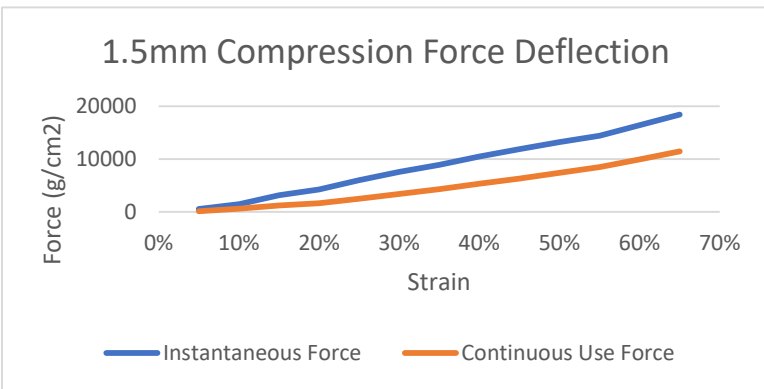
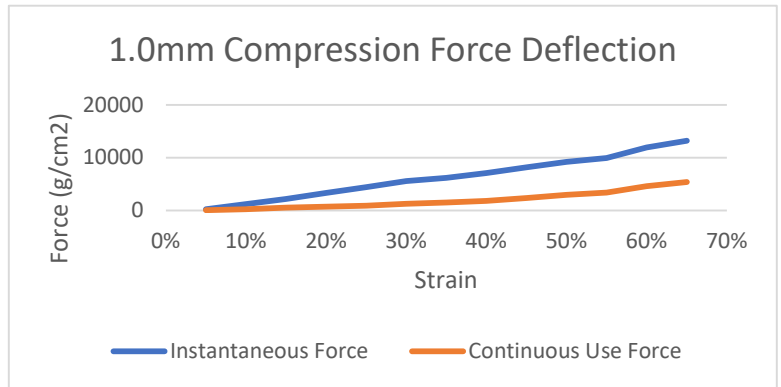
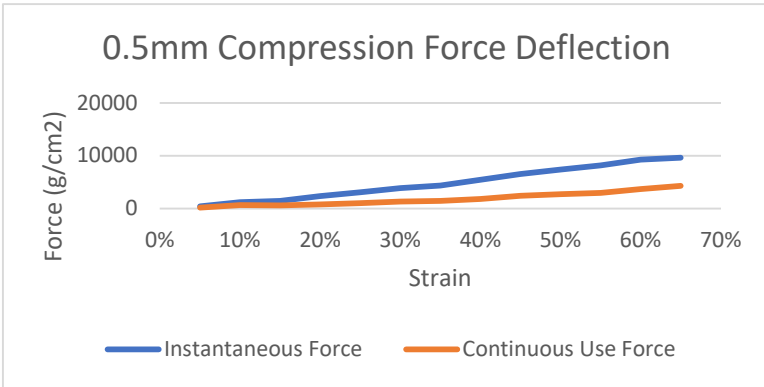
## Features:

- Excellent Thermal Conductivity
- Excellent Compression Characteristics
- Good Wet-Out
- Superb Flexibility
- Excellent Converting Properties
- RoHS and HF Compliant



## Applications:

- LED Lighting
- Battery Components
- Infotainment Modules
- Smartphones
- Tablets
- Computers
- Digital Personal Assistants
- Automotive Lighting



Specific tests should be performed by the end user to determine the product stability for the particular application.

### For Additional Information:

E-mail: [sales@polymerscience.com](mailto:sales@polymerscience.com)  
 Toll Free: +1 888.533.7004  
 Web: [www.polymerscience.com](http://www.polymerscience.com)  
 Revision: 040621